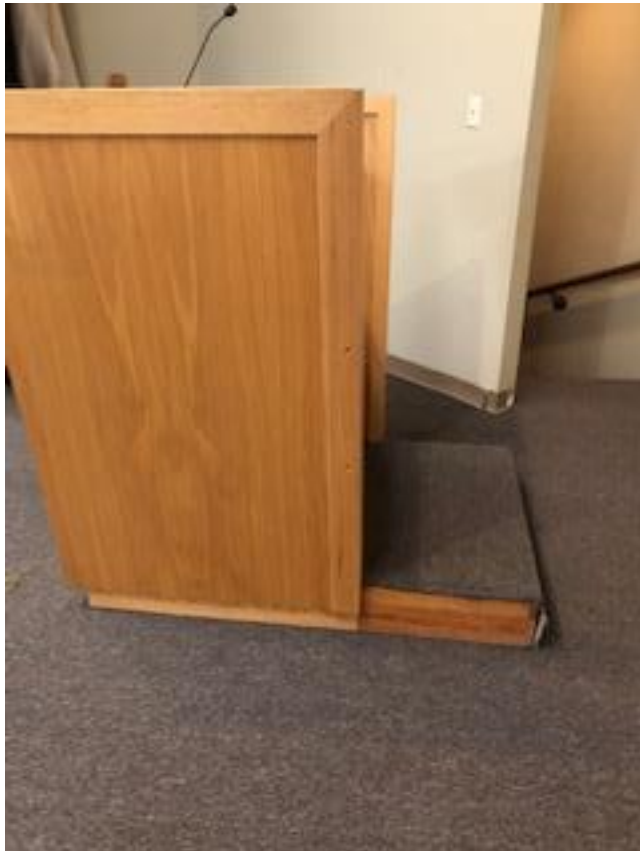




**HYMN
BOARD(S)**



LECTURN

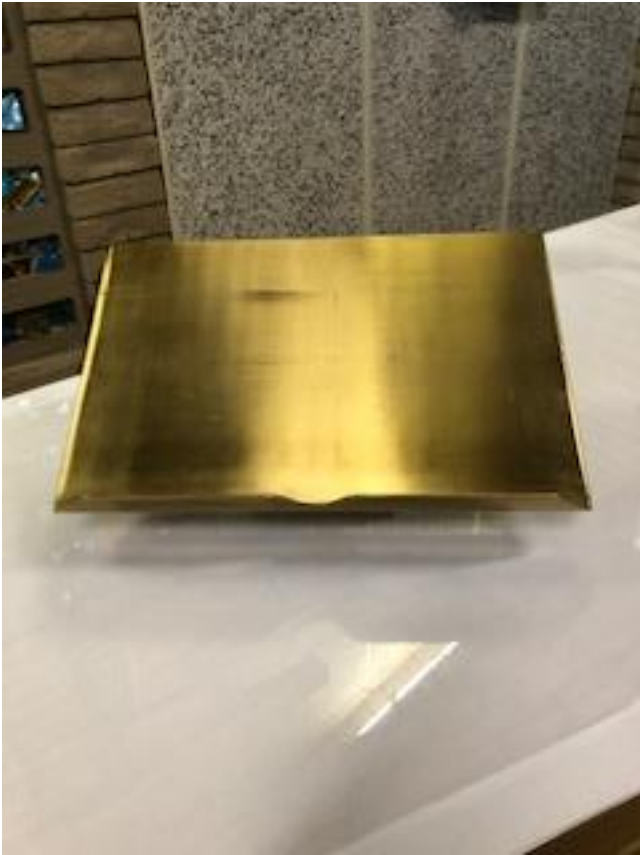


PULPIT



ALTAR





**MISSAL
STAND**



PEWS

CHANCEL FURNISHINGS: ALL MADE OF “what appears to be” White Oak Finish

Six (6) **HYMN BOARDS** with cross (with numbers) 36” h x 20” w with six (6) slots for numbers (4” h)

One (1) **LECTURN**
Top with angled missal wood cross on front two (2) shelves 46” h x 42” w x 29¼” d
24” h x 9” w (set in recess of front panel 16” w)
1) 11” from top; 2) 4” off floor

One (1) **PULPIT**
Top with angled missal Built in step with carpet wood cross on front one (1) shelf 52” h x 4’ w x 32” d (without step)
6” h x 35” w x 18 ½”d (past pulpit)
24” h x 9” w (set in recess of front panel 16” w)
11” from top

One (1) **ALTAR** (see drawing page 2)
Mensa (with panel between top & base) Tapezoid base wood panel on front with Chi Rho wood carving two (2) shelves 3 outlets (from left edge) Includes Fair Linen 3” thick x 10’ w x 36” d Total height 52”
3” h x 62” w x ___ 16” d
31” h x 6’ 2” w at top; 7’ 4” w at floor by 19”d at top; 27”d at floor
16” h x 8” w
1) 11” from top; 2) 17” off floor
11½”, 33”, 44 ½”

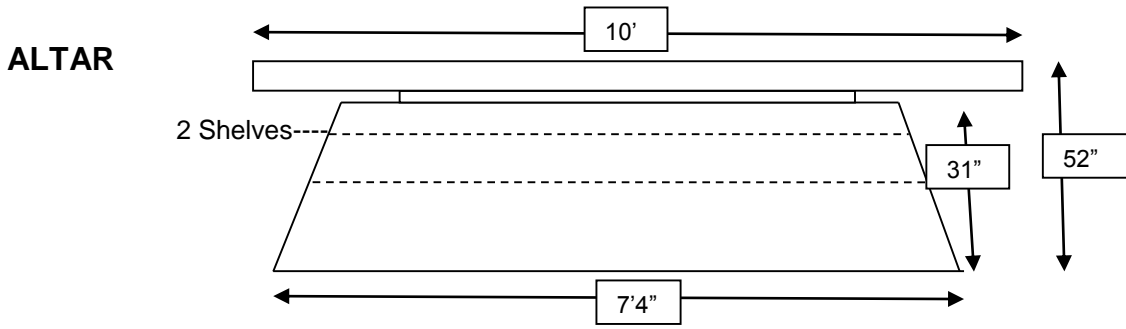
PEWS (with green padded backs & seats?)

One (2) **BRASS MISSAL STAND**
(three-step square base)

Two (2) **CHRISTIAN FLAGS WITH STAND**

One (1) **AMERICAN FLAG WITH STAND**

Two (2) **FLOWER STANDS** (Handmade)
Total size 3 tiers 50 ½ “ w x 27” h x 27”d
8 ¾” d



All item must be picked up from Eternal Life Lutheran Church, 7025 E. Main Street, Mesa, AZ.

Contact:
Rev. Steven J. H. Resner, Em., Vacancy Pastor
Church office: 480-985-0224; Pastor's cell: 574-780-0924

See attached file with photos.